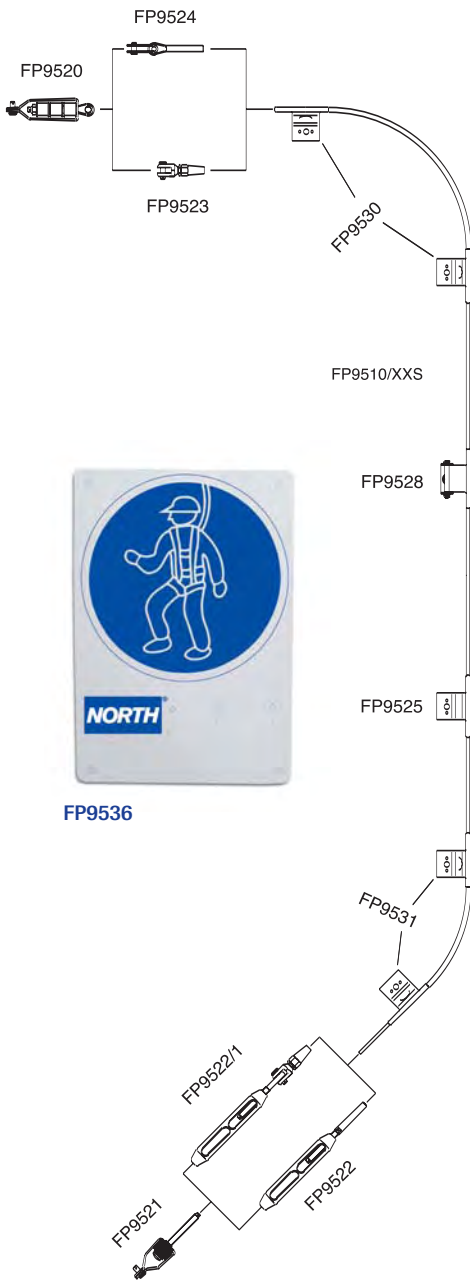


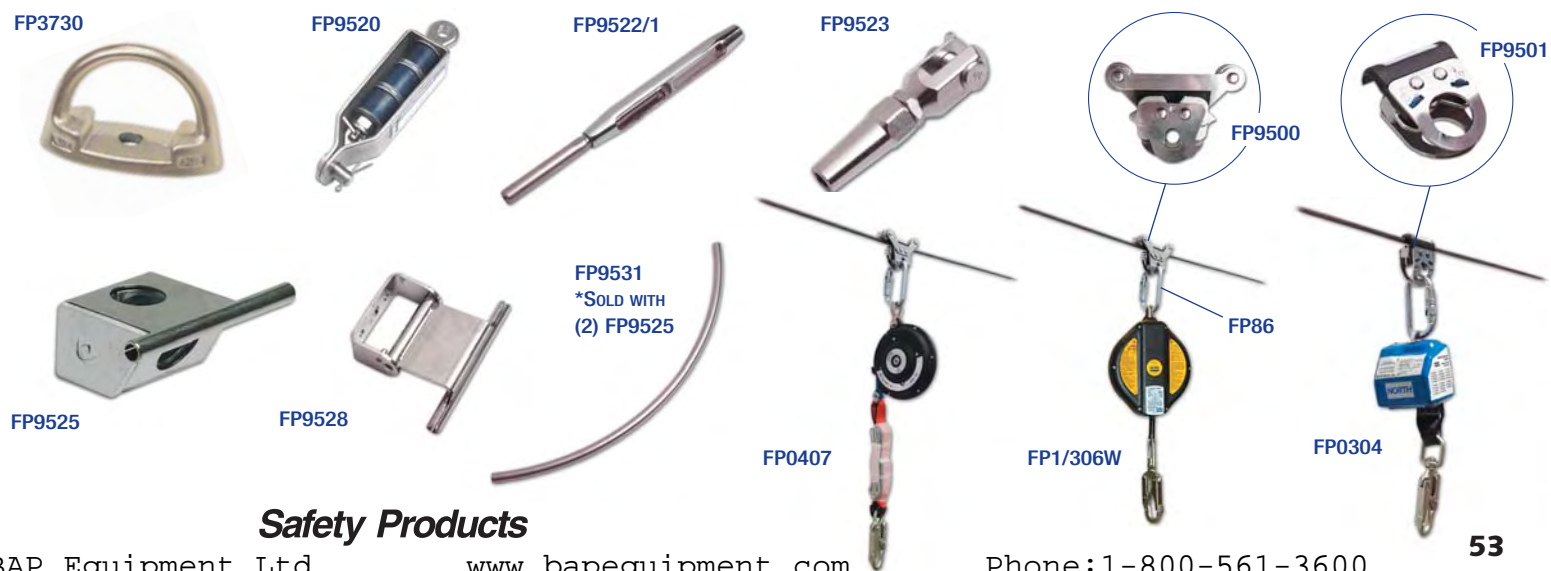
COMPONENTS OF A SAF-T-LINE



Part No	Description
FP3730	Anti rollout anchorage "D", tensile strength 22kN (5,000 lbs)
FP9500	Simple safety runner with connector and roller kit
FP9501	Simple safety runner with large opening connector
FP9502	Simple safety runner with small opening connector
FP9510/XXS	Stainless steel horizontal lifeline (per foot)
FP9520	Shock absorber
FP9521	Pre-tensionner
FP9522/2	Setable tensor
FP9522/1	Setable with tensor swagless terminal
FP9523	Swageless terminal for cable
FP9524	Adjustable wire rope ending with MR10
FP9525	Fix intermediate support
FP9526	Fix intermediate 45 degree
FP9528	Mobile intermediate support
FP9529	Mobile intermediate support for vertical system
FP9530	Corner support 90 degrees
FP9531	Corner support 135 degrees
FP9536	Safety panel

Fall Arrest Device for Saf-T-Line

Part No	Description	Length
FP0407	Duralite self-retracting web lanyard	20' (6 m)
FP1/306W	"Duralite II" self -retracting lifeline, nylon web	20' (6 m)
FP0304	Retractable web lanyard	8' (2.4 m)
FP2/315S	Self-retracting lifeline, stainless steel housing	50' (15 m)



Safety Products



The RungMaster is a cost effective way to protect your workers when they are climbing fixed ladders. All RungMaster components are made from galvanized steel for maintenance-free operation. The system comes complete with an energy absorber; which is built into the top bracket. The energy absorber will deploy at 900lbs (4kN), keeping the ladder from being damaged in the event of a fall. The RungMaster system comes with all the equipment necessary to install the system on any continuous straight fixed ladder system. All RungMaster Safety Systems are engineered to meet or exceed applicable CSA, ANSI and OSHA requirements.

Installation of your RungMaster kit requires no special tools and can be installed in minutes. Simply start at the top of your ladder and work your way down. Follow the instruction manual for positioning of intermediate brackets. Once all the components are installed, simply tension the system using the turnbuckle and cut the excess cable off (if necessary). It's that simple!

To order A RungMaster System:

1. Choose the type of top bracket; regular bracket use FP6000/XX (5/16" cable) or FP6200/XX (3/8" cable) and for ladders not extended above the platform use the extended bracket FP6001/XX (5/16" cable) or FP6201 (3/8" cable)
2. Obtain the height of the ladder
3. Select the kit based on the length of the ladder (i.e. 50' (15 m) ladder requires a FP6000/50 kit)
4. If your ladder is between sizes, then select the next longer length of kit to ensure you have enough cable
5. Select the number of Automatic cable grabs assemblies required (FP571/8 or FP571/10)



FP6000/XX

Part No	Description
FP6000/20 TO 200	Permanent vertical system including: (1) top bracket with built in shock absorber, (1) bottom bracket, (1) cable adjuster, (2) cable grips, (**) intermediate cable supports, (1) 20' to 200' (6m to 61 m) galvanized cable 5/16" (8 mm)
FP6200/20 TO 200	Same as above with 3/8" (10 mm) galvanized cable
FP6001/20 TO 200 (for extended bracket applications)	Permanent vertical system including: (1) extended top bracket with built in shock absorber, (1) bottom bracket, (1) cable adjuster, (2) cable grips, (**) intermediate cable supports, (1) 20' to 200' (6m to 61 m) galvanized cable 5/16" (8 mm)
FP6201/20 TO 200	Same as above with 3/8" (10 mm) galvanized cable

** Number of intermediate cable supports depend on the length of the system.

ACCESSORIES



FP571/8

Part No	Description
FP6000/TB	Vertical system regular top bracket
FP6001/TB	Vertical system extended top bracket
FP6002	Vertical system bottom bracket
FP571/8	Cable grab for vertical system with carabiner - 5/16" (8 mm)
FP571/10	Cable grab for vertical system with carabiner - 3/8" (10 mm)
FP6000/HW	Hardware kit for RungMaster
FP722/4DP	Polyester cross chest harness with back, sternal and side D-rings - CSA approved for ladder climbing and work positioning
FP81F/4DLA	Rite-On polyester harness with back, front and side D-rings - CSA approved for fall arrest, work positioning, descent and ladder climbing
FP810/4DLA	Polyester harness with back, front and side D-rings - CSA approved for fall arrest, work positioning, descent and ladder climbing

Applications

- Industrial fixed ladders
- Steel manufacturing
- Water towers
- Silos
- Roof access ladder
- Replacement for caged ladder
- Communication towers
- Lightning towers
- Stadium lighting tower
- Petrochemical plants
- Chimneys
- Automotive plants
- Guyed towers and antennas

The Power Post provides 2 independent swivel anchor tie-offs for fall arrest or travel restraint. The post is constructed from lightweight steel which is powder coated safety yellow for visibility. The Power Post system is comprised of the Power Post anchor and the Power Post fixed base. The post fits into the base and has a simple quick-release pin to secure it in place. The base can be bolted or welded onto the structure. Bases can be installed at multiple locations and the post can be transported from location to location.

Installation of bases requires a professional engineer approval. Base can be welded or bolted to the structure. Power Post installs into the base in seconds.

Features/Benefits

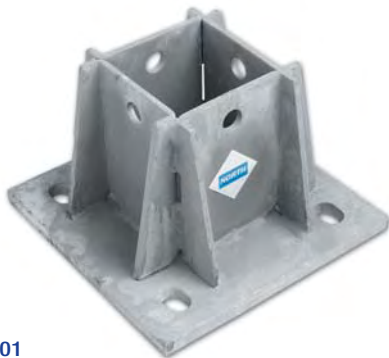
- Ideal for transformer inspection, machinery inspection or anywhere a fixed anchor is required
- Overall dimensions 4"x4"x41.5" (10cm x 10cm x 105cm)
- Connection point height is 42" (107cm)
- Provides 2 independent fully rotational (360°) anchors to accommodate up to two workers
- Constructed from steel (350W MPa) powder coated safety yellow
- Must be used with a shock absorbing lanyard or self-retracting lifeline

Part No	Description
FP6700	Portable anchor post
FP6701	Post base

FP6700



FP6701



Applications:

- Transformer inspection
- Mining
- Construction
- Roofing
- Presses
- Tanker cars and trailers



BEAMGUARD KITS

The Beamguard™ system is a cost effective way to protect your workers when they are working in an area where no suitable fixed anchorage exists. Beamguard Safety Post System offers a complete temporary horizontal lifeline system for structural steel. It can be used as a single span for lengths between 10' to 60' (3 m to 18 m) or multiple spans every 60' (18 m).

Features/Benefits

- Ideal for steel erection, bridgework, girders and roof peaks
- Designed to accommodate up to (2) two workers per span
- These stanchions are lightweight and install in seconds with no special tools. The unique Quick Rod™ design allows the user to install and remove the stanchions in seconds. No torque settings are required during the installation.
- The stanchion has an inherent shock absorbing property which lowers the cost of the entire system, speeds up installation and allows the users to use longer spans without interference from typical inline shock absorbers.
- If an intermediate is required, a pass thru "Q" bracket can be installed to maintain 100% tie off without the use of a double lanyard (Y-lanyard).
- Meets current OSHA requirements for horizontal lifelines.
- The stanchion mounts to any beam with a top flange of 4" (101.6mm) minimum width and up to 2-1/2" (63.5mm) thick web.
- All Beamguard safety posts are 42" (107 cm) in height which also serves as a hand grab to steady the worker when they need to travel around the post. The Beamguard is also offset at an angle to allow the user an easy passage around the intermediate post, even when carrying tools and or materials.
- For steel erection, the Beamguard safety posts together with the horizontal lifeline kit can be installed on the ground and then lifted into position on the steel.

Installation of your Beamguard kits requires no special tools and can be installed in seconds. Follow the instruction manual to install the Beamguard posts. Once all posts are installed, string the cable from one post. The proper tension of the system is indicated in the manual. It's that simple!

Part No	Description
FP07/60	DESIGNED FOR TWO USERS MAXIMUM: (2) Beamguard safety stanchions, (4) Quick rods, (4) Quick thread wing nuts, (2) 1/2" safety shackles, (2) Custom safety cables, (1) Cable assembly 60' (18 m) in length, Complete instructions and easy to understand fall clearance tables
FP07/120	DESIGNED FOR TWO USERS MAXIMUM: (3) Beamguard safety stanchions, (6) Quick rods, (6) Quick thread wing nuts, (2) 1/2" safety shackle, (1) Custom safety cables, (1) Cable assembly 120' (36 m) in length, (1) "Q" bracket, Complete instructions and easy to understand fall clearance tables



FP07/60
BEAMGUARD SYSTEM



FP07/12



BEAMGUARD
ON BEAM

REPLACEMENT PARTS



FP0701



FP0702

Part No	Description
FP0701	Beamguard safety post complete with all hardware
FP0702	Pass thru "Q" bracket with mounting hardware
FP0705	Side safety cable
FP0706	Quick rod

Safety Products

Safety and mobility – these are the hallmarks of North’s Temporary Horizontal Lifeline (HLL) Systems. Whether rope or cable, these systems provide durable protection that can be moved from site to site where there are suitable approved anchor points. 100% portable and lightweight, these systems are ideal for the construction job site or bridge and building inspection activities.

TEMPORARY HL KIT - ROPE

Made with synthetic kernmantle rope, this is the lightest of North’s horizontal lifelines. It spans up to 60 feet (18 m) for up to 2 people.



Part No	Description
FP1001	60’ (18 m) of 5/8” (16mm) synthetic lifeline rope, 2 carabiners, 2 anchor slings, 1 rope tensioner, 1 lanyard (4 foot) with energy absorber and convenient carrying bag.
FP16ST/KH60	60’ (18 m) horizontal lifeline, 5/8” (16 mm) hard lay polyester kernmantle rope, one termination and carabiner.
FP85	Carabiner connector, steel 1/4 turn twist lock, 5/8” (16 mm) opening.
FP02/6	PVC coated cable sling, 6’ (1,8 m) long.
FP3521	Rope tensioner for 5/8” (16 mm) kernmantle rope.
FP22322/4	25 mm (1”) nylon web lanyard with Soft Pack energy absorber, double locking ergonomic snap hook at both ends, 4 feet long.
FP1010	Large equipment carrying bag, ideal for lifeline kits.

TEMPORARY HL KIT - CABLE

The “SteelMan” Temporary Horizontal Lifelines provide a durable version of the rope lifeline. Galvanized steel cable resists additional wear and tear found in severe environments. This kit is ideally used in construction, the petrochemical industry and steel erection. It spans up to 60’ (18 m) for up to 2 people.



Part No	Description
FP1002	Temporary HL Kit, comprising 60’ (18m) of 3/8” (10mm) galvanized cable, 2 anchor slings, cable tensioner and cable clips, Soft Pak energy absorber, 2 carabiner connectors.
FP9380/60	Galvanized cable 3/8” (10 mm), 60 feet long.
FP03/6	Pass through anchor sling 2” (50 mm) nylon webbing, one small and one large “D” ring, 6 feet long.
FP9580	Cable tensioner.
FP9138	Cable clip.
FPD773	Carabiner connector, steel, 1/4 turn twist lock, 3/4” (19 mm) opening.

ACCESSORIES



Part No	Description
FP3000	CanRest metallic energy absorber for lifeline limits anchor loads to 2800 lbs (13kN)
FP1800	Replacement Soft Pak tear web energy absorber with weather proof cover. Reduces loads on end anchor to below 1800 lbs. (8 kN).
FP1801	Replacement Soft Pak tear web energy absorber. Reduces loads on end anchor to below 1800 lbs. (8 kN).
FP9150	Optional split pulley for use on horizontal lifelines.

Safety Products