

HUMAN SKELETONS

An exceptional price for this three-foot plastic skeleton on a heavy metal stand. This affordable teaching skeleton is wired for natural movement and highlights a removable skull with the calvarium cut. Mandible hinged with springs in place to examine TMJ problems. Arms and legs are held on by small screws, making it easy to bend the extremities in all directions. All of the bones are cast individually, except in the hands and feet. Key Card included.



B10201

66" FULL-SIZE HUMAN SKELETON

This full-sized 66" skeleton is cast in durable, natural color plastic mounted on a metal stand. Bones are cast individually with anatomical detail. All moveable parts are joined by connectors, and utilized in such a way to allow movement around the joint.

Item No.	Description
B10201	66" (168cm) Full-size Skeleton
B10202	33" (85cm) Half-size Skeleton
B10205	33" (85cm) Half-size Skeleton w/nerve endings

ECONOMY HUMAN SKULL

This plastic, life-sized human skull is designed to meet your budget and your objective for introductory anatomical studies. The 18th left mandibular model canine, and 24th left central incisor are removable to show the tooth roots. Spring-mounted mandible and sectioned calvarium are detachable.



Item No.	Description
B10207	Life-size Human Skull

ECONOMICAL EAR MODEL

This four-part plastic model is enlarged approximately four times. The detachable petrous portion of the temporal bone reveals the middle and inner ear chambers, for a closer view. Removable tympanic membrane with malleus and incus, and stapes. The external ear is represented by the auricle and auditory canal. Includes labeled diagram.



Dimensions: 14" x 6½" x 10"

Item No.	Description
B10402	Ear Model (4 Parts)

JUMBO HEART MODEL

This colorful, durable, plastic jumbo heart model is excellent for patient education or elementary science classes. Dissectible into three parts showing anterior, posterior, and inferior views, along with details usually found only on more expensive models.



Key card with 27 labels included 11¼" x 8"

Item No.	Description
B10404	Jumbo Heart Model (3 Parts)

HUMAN SPINAL COLUMN

This (50cm) spinal column with occipital bone consists of 24 vertebrae with soft vinyl discs, sacrum, coccyx, and pelvic bones with femur heads. Nerve endings are exposed. Mounted on a metal stand.



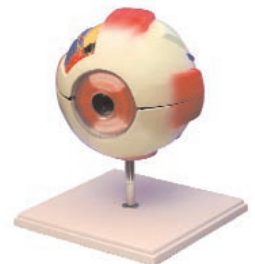
B10206

Dimensions: 6" x 24" x 3"

Item No.	Description
B10206	Human Spinal Column Model

EYE MODEL

This six-part plastic model is enlarged approximately four times, displays muscles, blood vessels, optical nerve and other major features of the human eye. Eyeball is dissectible horizontally to reveal retina, choroid and sclerotic. The iris and cornea unit is detachable. Convex lens magnifies and forms inverted images. Key included. Mounted on plastic base.



Dimensions: 9½" x 5½" x 5½"

Item No.	Description
B10403	Eye Model (6 Parts)

LIFE-SIZE HEART MODEL

This full-sized heart can be removed from its base and split into two parts. A viewing of the chambers, valves and major vessels. Labeled diagram included.



Dimensions: 6" x 3.5" x 3"

Item No.	Description
B10405	Life-Size Heart Model (2 Parts)

Torso with Detachable Head

SEXLESS HUMAN TORSO 50CM

For a closer view of the anatomical details, the torso is dissectible into ten parts. The respiratory, circulatory, digestive, nervous, and urinary system is illustrated. Easy removable head, lungs, heart, liver, stomach, and intestine for further study. The left side of the face shows muscle, eyeball, and teeth. Mounted on a plastic base. Includes a full-color instruction manual.

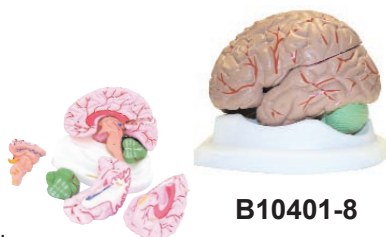


SEXLESS HUMAN TORSO 25CM

Sexless Human Torso (25cm) The six-part plastic model torso displays the respiratory, circulatory, digestive, nervous and urinary systems, as well as musculature. easy removal of the lungs, heart, liver, stomach and intestines for further examination. This model is compact, durable, and is ideal for introductory biological science classes. Key included.

LIFE-SIZE BRAIN MODELS

The life sized models splits into various parts. The eight part model is sagittally sectioned; both halves can be separated into frontal with parietal lobes, temporal with occipital lobes, half of the brain stem, and half of the cerebellum. The eight piece model rests in a plastic base and can be removed for closer inspection. Please note 3 and 4 part model displays same appearance.



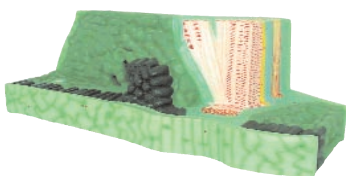
B10401-8

Dimensions: (7½" x 6½" x 5½")

Item No.	Description
B10401-3	Life-Size Brain Model (3 Parts)
B10401-4	Life-Size Brain Model (4 Parts)
B10401-8	Life-Size Brain Model (8 Parts)

LEAF STRUCTURE MODEL

Magnified 45 times from a lima bean leaf, this plastic model vividly shows the transverse and longitudinal sections as well as the upper and lower epidermis. The mesophyll includes palisada parenchyma and spongy parenchyma. The surfaces display stomas and guard cells. Also shown are details of vascular bundles, such as xylem, phloem and the veins.



Dimensions: 18" x 9" x 6"

Item No.	Description
B10301	Leaf Structure Model

SKIN MODEL

This plastic model is enlarged 50 times from a human scalp section. This relief model displays contrasting colors of the three skin layers—epidermis, derm, and subcutis, with nerves, sweat glands, hair roots and vessels. Labeled diagram included.



Dimensions: 10" x 9"x 1.5"

Item No.	Description
B10414	Skin Model

Item No.	Description
B10105	Sexless Human Torso (6 parts-25cm)
B10106	Sexless Human Torso (11 parts-50cm)

TEETH MODEL

This larger-than-life, demonstration model is a great way to teach children proper brushing techniques. Displays an upper and lower half of an adult's dentition. A flexible joint between the jaws allows for easy movements.



Dimensions: 7.8" x 9.4"x 5.5"

Item No.	Description
B10416	Teeth Model with Brush

STEM MODEL—MONOCOTYLEDON

This model of corn gives details of cellular anatomy of the generalized monocot in cross and longitudinal section. Shows important structures such as cuticular layer, epidermis, thick walled mechanical tissue, fundamental parenchymatous tissue and the details of closed vascular bundles. Enlarged 45 times, made of plastic and mounted on a wooden base.

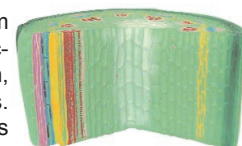


Dimensions: 16.5"x 17" x 6"

Item No.	Description
B10302	Stem Model—Monocotyledon

STEM MODEL—DICOTYLEDON

Modeled after a sunflower, this one year dicot stem gives anatomy in cross, radial and tangential sections. Shows epidermis, cork layer, phloem region, cambium, xylem region, pith and vital structures. Enlarged 45 times. Made of plastic and includes diagram.



Dimensions: (13.5" x 7" x 6")

Item No.	Description
B10303	Stem Model—Dicotyledon

* Kidney Model has been discontinued